

# #1 – Huff Lane Park & Ravenwood Ave

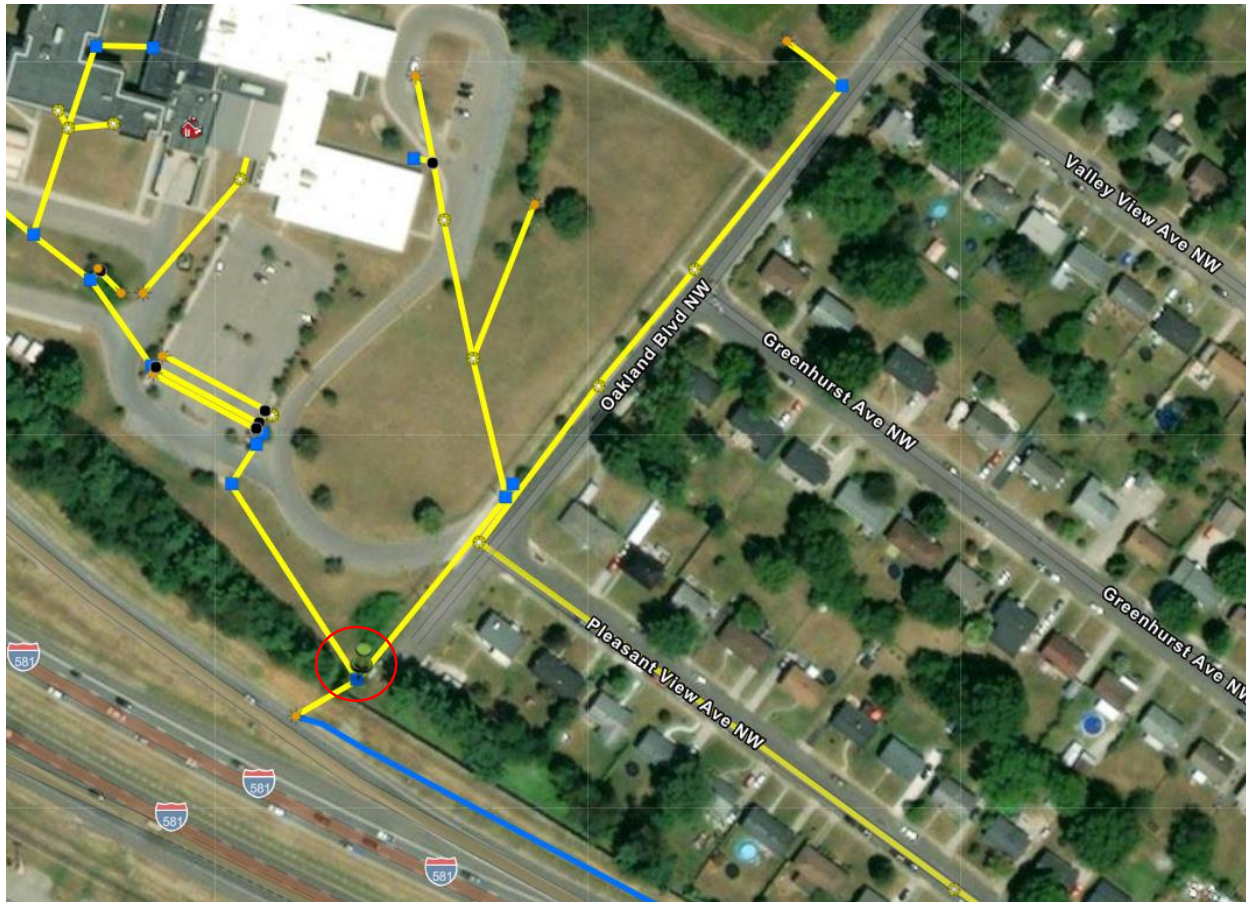
Inlet is on park-side sidewalk. Bus stops on same road and walking path to park and malls, close to local neighborhoods. Near parking for park access. **Measurements are approximately: 202" x 34"**



## #2 – Oakland Blvd & Roundhill Elementary

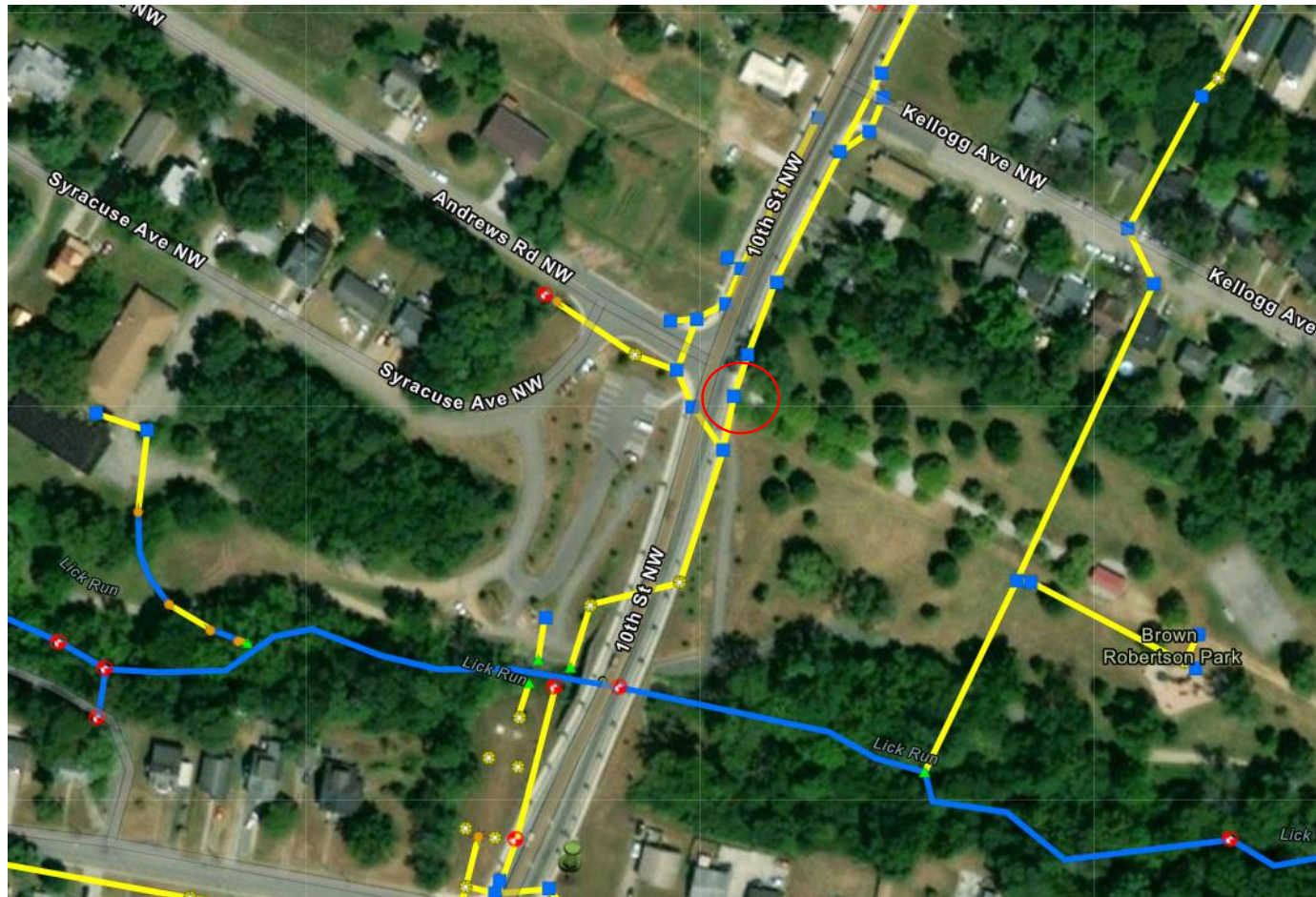
Inlet is on sidewalk, close to school entrance. Great view of inlet as you enter or exit school.

**Measurements are approximately: 96" x 34"**



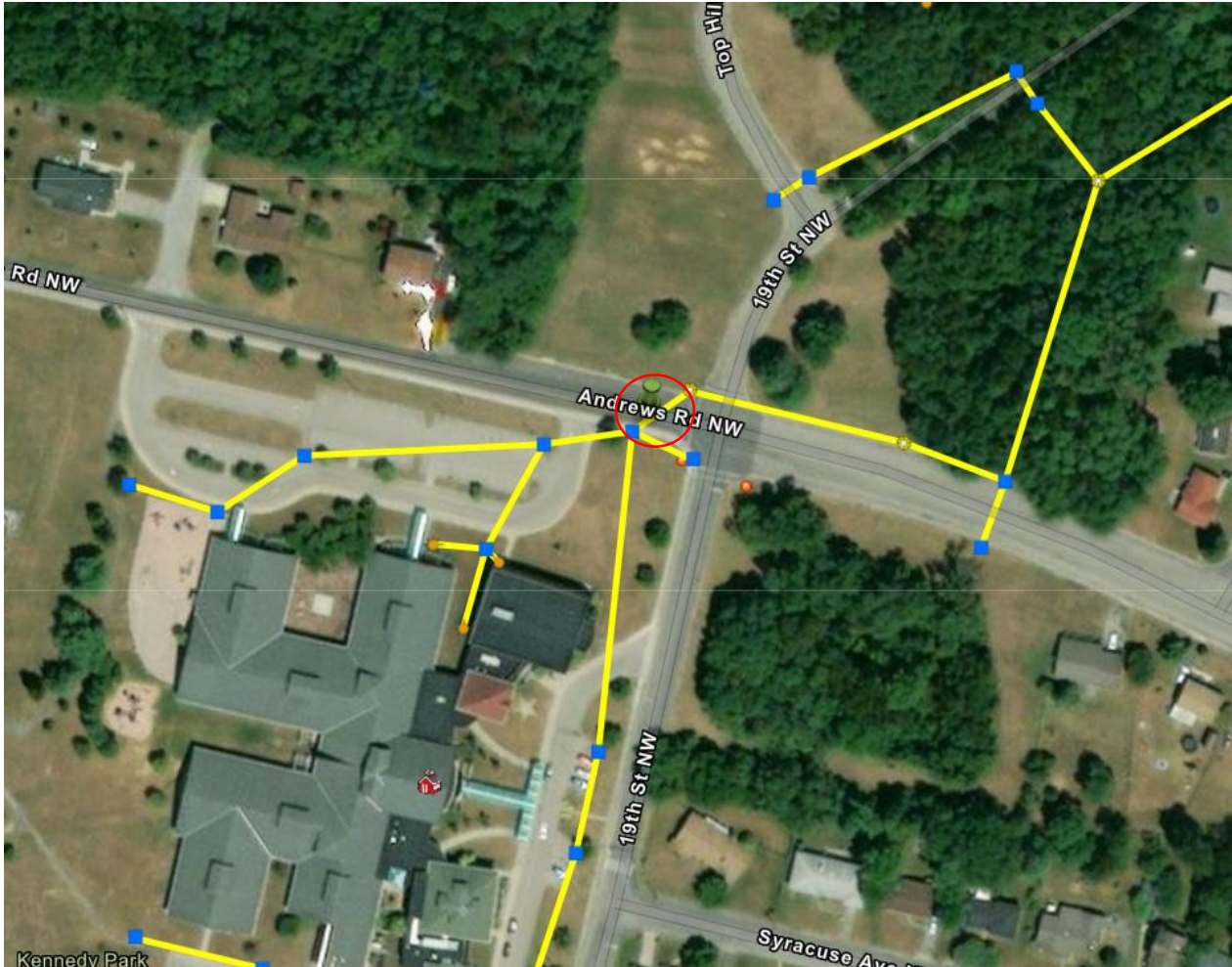
# #3 – 10<sup>th</sup> St. – Brown Robertson Park

Inlet is on park-side sidewalk. Near greenway, stream, and park entrance **Measurements are approximately: 156" x 34"**



# #4 – Andrews Rd & Roanoke Academy

Inlet is on school-side sidewalk by entrance. Near Kennedy park and on walking path for school. \*this is a very long inlet – larger than others. **Measurements are approximately: 252" x 34"**



# #5 – Loudon & 5<sup>th</sup>

Potential inlets on both sides of Loudon Ave if someone wants to do a pair. Is directly over Trout Run stream. **Measurements are approximately: 136" x 34" (Other inlet on Loudon: 184" x 34")**



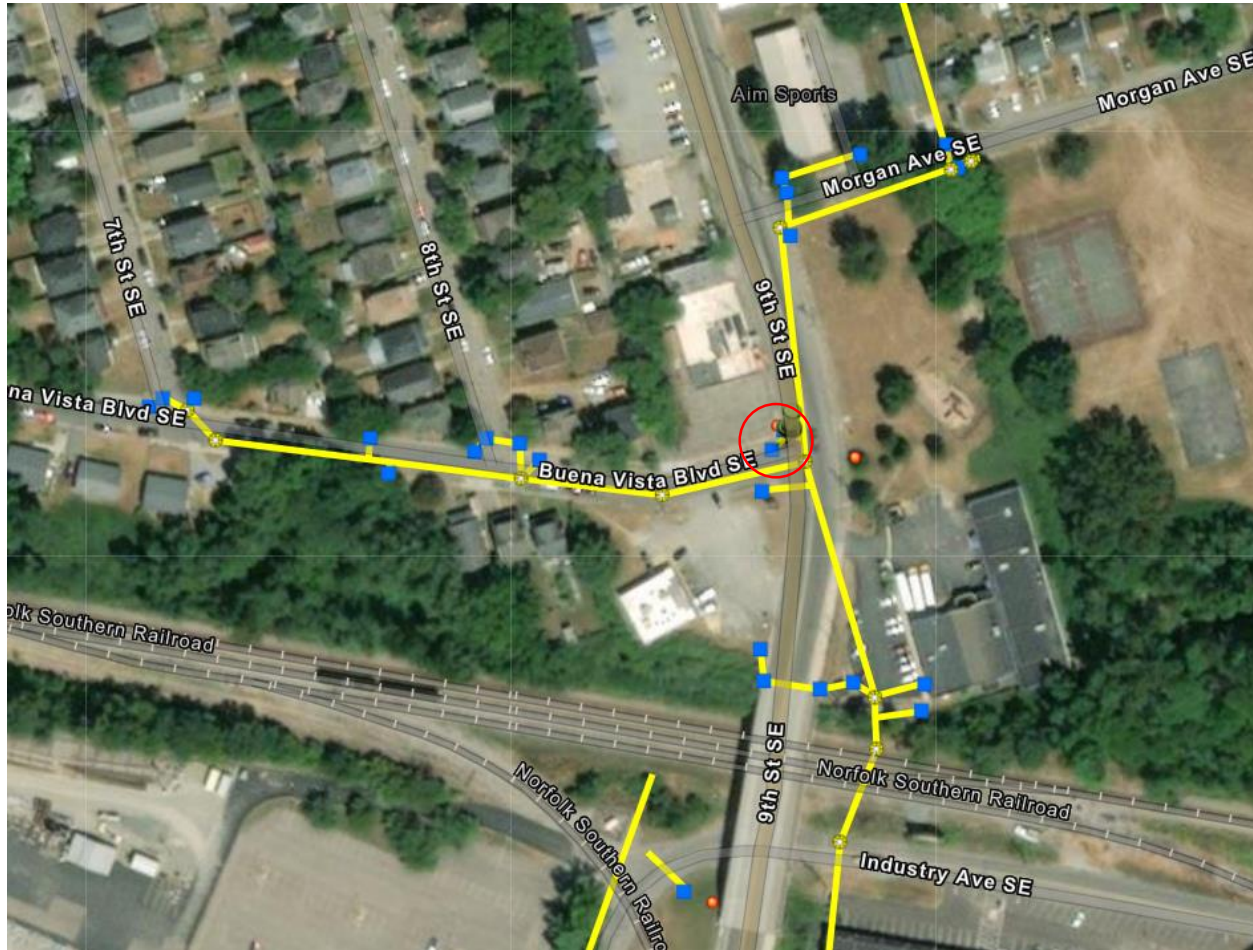
# #6 – Highland Park & Albemarle

Inlet is on park-side (no sidewalk). Adjacent to Highland park and SW neighborhoods. Lots of local walkers/park users/ dog walkers. This is a few inlets together in a odd formation - could paint the large area only or all three areas. **Measurements are approximately: 78" x 96" (upper), 145" x 42" (lower inlets)**



# #7 – 9<sup>th</sup> St & Buena Vista Blvd

Inlet is on sidewalk, bus-stop, near 7-11 and Boys and Girls club (across street). **Measurements are approximately: 160" x 34"**



# #8 – Bennington St & Brownlee Ave

Inlet is on sidewalk. Relatively nearby: WVWA treatment plan, greenway access and path, local bus stop, neighborhoods. There is another option across the street from this as well if someone would like to do a pair. **Both measurements are approximately: 109" x 34"**

